



### 3 bed upper flat to buy in NE29

Hopper Street West, North Shields, North Shields, Tyne and Wear, NE29 0EG

# £99,950

🛏 x3 🚿 x1 🚻 x1

Tenure

**Leasehold**

### Property features

✔ EPC Rating E

On Street parking

## Key Information

- ✓ Council Tax: Band A
- ✓ EPC Rating: E
- ✓ Heating supply: Gas

## Description

A well-presented three-bedroom upper flat situated in a popular and convenient location close to the town centre and excellent transport links. The property benefits from a private rear yard, offering valuable outdoor space, and is ideally suited to first-time buyers, families, or investors alike.

Council Tax Band: A

Tenure: Leasehold

Length of Lease: 959

Price: £99,950

Property Type: Upper Flat

Parking: On Street

Heating: Gas

## Main bedroom

4.40m x 3.60m (14'5" x 11'9")

Generous main bedroom with double glazed window and central heating radiator.



## Kitchen

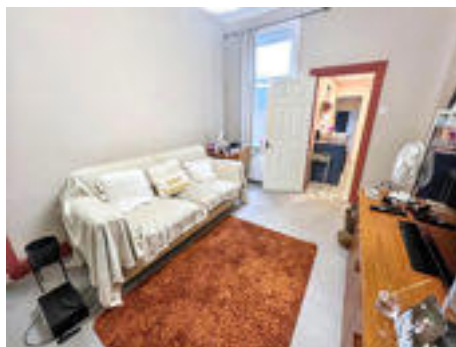
2.00m x 3.00m (6'6" x 9'10")

Fitted wall and base units, work surface, stainless steel sink, electric oven and hob, double glazed window and door to the rear stairs.



## Lounge

4.40m x 3.50m (14'5" x 11'5")



## Bedroom Two

2.10m x 3.60m (6'10" x 11'9")

Double glazed window and central heating radiator.



## Bedroom Three

2.10m x 3.00m (6'10" x 9'10")

Double glazed window and central heating radiator.



## Bathroom

Double glazed window, central heating radiator, vanity hand basin, low level W.C and panelled bath with shower over.



---

## Rear Yard





First Floor

This floor plan is for illustrative purposes only. It is not drawn to scale. Any measurements, floor areas (including any total floor area), openings and orientations are approximate. No details are guaranteed, they cannot be relied upon for any purpose and do not form any part of any agreement. No liability is taken for any error, omission or misstatement. A party must rely upon its own inspection(s). Powered by www.Propertybox.io

Energy Efficiency Rating		Current	Potential
<i>Very energy efficient - lower running costs</i>			
(92-100) <b>A</b>			
(81-91) <b>B</b>			
(69-80) <b>C</b>			70
(55-68) <b>D</b>			
(39-54) <b>E</b>	44		
(21-38) <b>F</b>			
(1-20) <b>G</b>			
<i>Not energy efficient - higher running costs</i>			
<b>England, Scotland &amp; Wales</b>		EU Directive 2002/91/EC	

Hopper Street West, North Shields, North Shields, Tyne and Wear, NE29 0EG

Contact your local branch today for more information on this property:

**White Rose House, Thurston Road, Northallerton, North Yorkshire, DL6 2NA,**

<https://www.alignsurveyors.co.uk/>

These particulars, whilst believed to be accurate are set out as a general outline only for guidance and do not constitute any part of an offer or contract. Intending purchasers should not rely on them as statements of representation of fact, but must satisfy themselves by inspection or otherwise as to their accuracy. No person in this firm's employment has the authority to make or give any representation or warranty in respect of the property.

