



3 bed semi-detached house to buy in NE23

Village Road, Cramlington,
Northumberland, NE23 2AQ

£179,950

🏠 x3 🚗 x1 🚪 x1

Tenure

Freehold

Driveway parking

Property features

- ✓ Spacious home
- ✓ Refurbished
- ✓ Generous garden
- ✓ No onward purchase - Ready to move in
- ✓ EPC Rating C

Key Information

- ✓ Council Tax: Band A
- ✓ EPC Rating: C
- ✓ Heating supply: Gas

Description

Well located within Cramlington, this beautifully refurbished property presents an ideal opportunity for families searching for a contemporary and convenient home. Boasting a new kitchen, bathroom and flooring throughout, the house showcases a spacious and airy open-plan living and dining area—perfect for entertaining guests or unwinding with loved ones in comfort.

To the front, a private driveway offers stress-free parking, while the generous rear garden, which enjoys a desirable south-westerly aspect, provides ample space for children to play or for the keen gardener to create a welcoming outdoor retreat. With exciting potential for further enhancements, the garden is sure to impress those with vision.

Enjoy the convenience of being just a short stroll from local shops and essential amenities, making daily life effortless. Cramlington itself offers excellent transport links, reputable schools, and a strong sense of community, ensuring it remains highly sought after by families and commuters alike.

With no onward purchase to consider, moving in could be a smooth and straightforward process. This is a wonderful home with so much to offer.

Arrange a viewing today and discover the charm and potential of this exceptional property for yourself.

Council Tax Band: A

Tenure: Freehold

Price: £179,950

Property Type: Semi-detached house

Parking: Driveway

Heating: Gas

Entrance Porch

Hallway



Living Room



Dining Room



Kitchen



Landing



Bedroom 1



Bedroom 2



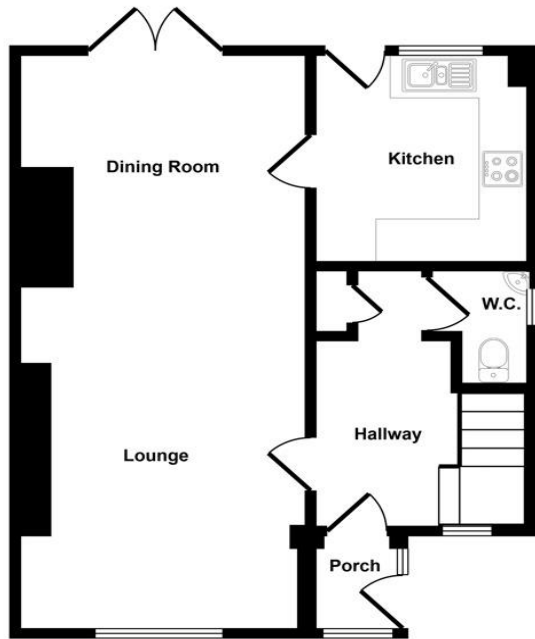
Bedroom 3

Bathroom

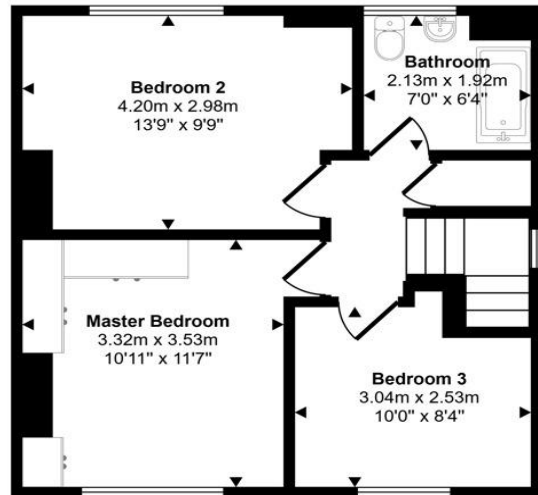


Garden

Approx Gross Internal Area
93 sq m / 1005 sq ft



Ground Floor
Approx 50 sq m / 539 sq ft



First Floor
Approx 43 sq m / 467 sq ft

This floorplan is only for illustrative purposes and is not to scale. Measurements of rooms, doors, windows, and any items are approximate and no responsibility is taken for any error, omission or mis-statement. Icons of items such as bathroom suites are representations only and may not look like the real items. Made with Made Snappy 360.

Energy Efficiency Rating		Current	Potential
<i>Very energy efficient - lower running costs</i>			
(92-100) A			
(81-91) B			83
(69-80) C		70	
(55-68) D			
(39-54) E			
(21-38) F			
(1-20) G			
<i>Not energy efficient - higher running costs</i>			
England, Scotland & Wales		EU Directive 2002/91/EC	

Village Road, Cramlington, Northumberland, NE23 2AQ

Contact your local branch today for more information on this property:

White Rose House, Thurston Road, Northallerton, North Yorkshire, DL6 2NA,

<https://www.alignsurveyors.co.uk/>

These particulars, whilst believed to be accurate are set out as a general outline only for guidance and do not constitute any part of an offer or contract. Intending purchasers should not rely on them as statements of representation of fact, but must satisfy themselves by inspection or otherwise as to their accuracy. No person in this firm's employment has the authority to make or give any representation or warranty in respect of the property.

