



### 3 bed terraced house to buy in

Wrensfild Road, Stockton-on-Tees,  
Durham, TS19 0AY

# £80,000

🏠 x3 🚗 x1 🚲 x1

Tenure

**Freehold**

### Property features

- ✓ Three Generous Bedrooms
- ✓ Tenanted investment property  
£580PCM
- ✓ No Forward Chain
- ✓ EPC Rating C

On Street parking

## Key Information

- ✓ Council Tax: Band A
- ✓ EPC Rating: C
- ✓ Heating supply: Gas

## Description

This three-bedroom mid-terrace property on Wrensfield Road, Stockton-on-Tees is offered for sale with a tenant in situ, making it an ideal investment opportunity.

The accommodation briefly comprises an entrance hallway leading through to a comfortable lounge and a spacious kitchen/diner, providing a practical layout for modern living. To the first floor, there are three well-proportioned bedrooms along with a family bathroom.

Externally, the property benefits from a rear garden, offering outdoor space for tenants to enjoy, as well as on-street parking to the front.

Situated in a popular residential area, the property is conveniently located for local amenities, schools, and transport links.

Council Tax Band: A

Tenure: Freehold

Price: £80,000

Property Type: Terraced House

Parking: On Street

Heating: Gas

## Entrance



## Lounge

4.06m x 3.49m (13'3" x 11'5")



## Kitchen/Dining Area

8.34m x 2.91m (27'4" x 9'6")



## Stairs to First Floor

## Bedroom One

4.83m x 2.95m (15'10" x 9'8")



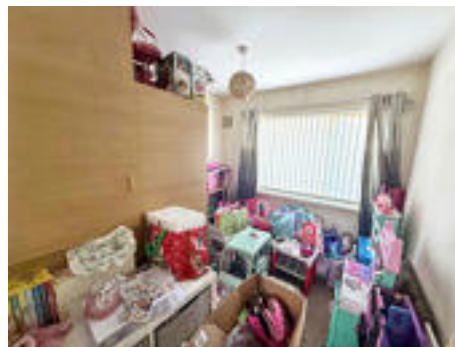
## Bedroom Two

4.84m x 3.56m (15'10" x 11'8")



## Bedroom Three

2.71m x 2.49m (8'10" x 8'2")



## Bathroom W/C

2.50m x 1.69m (8'2" x 5'6")



## External





Energy Efficiency Rating		
	Current	Potential
<i>Very energy efficient - lower running costs</i>		
(92-100) <b>A</b>		
(81-91) <b>B</b>		
(69-80) <b>C</b>	71	76
(55-68) <b>D</b>		
(39-54) <b>E</b>		
(21-38) <b>F</b>		
(1-20) <b>G</b>		
<i>Not energy efficient - higher running costs</i>		
<b>England, Scotland &amp; Wales</b>	EU Directive 2002/91/EC	

Wrensfield Road, Stockton-on-Tees, Durham, TS19 0AY

Contact your local branch today for more information on this property:

**White Rose House, Thurston Road, Northallerton, North Yorkshire, DL6 2NA,**

**<https://www.alignsurveyors.co.uk/>**

These particulars, whilst believed to be accurate are set out as a general outline only for guidance and do not constitute any part of an offer or contract. Intending purchasers should not rely on them as statements of representation of fact, but must satisfy themselves by inspection or otherwise as to their accuracy. No person in this firm's employment has the authority to make or give any representation or warranty in respect of the property.

