



3 bed flat to buy in HA1

Lensview Close, Harrow, Middlesex, HA1 4GU

£495,000 Starting Bid

x 3 x 2 x 1

Tenure

Leasehold

Property features

- ✓ Ground Floor Apartment
- ✓ Larger Than Average
- ✓ Mutii-Zone Underfloor Heating
- ✓ Allocated Parking Space
- ✓ EPC Rating B

Key Information

- ✓ Council Tax: Band E
- ✓ EPC Rating: B
- ✓ Heating supply: Gas
- ✓ Electric supply: National Grid
- ✓ Water supply: Direct mains water
- ✓ Broadband: FTTP (fibre to the premises)
- ✓ Mobile signal: Good

Description

Being sold via Secure Sale online bidding. Terms & Conditions apply. Starting Bid £495,000

Lawrence Rand are pleased to present this beautifully designed apartment, set on the ground floor of this popular modern development.

The property offers a bright and spacious open-plan kitchen/living area with integrated appliances. Offering generously sized accommodation throughout, a private patio, en-suite facilities and a superb position within the development.

Lensview Close is located in the highly sought-after Eastman Village, providing a vibrant residential setting with excellent local amenities nearby. The property is ideally positioned moments from a wide range of transport links, including rail services from Harrow & Wealdstone station and convenient bus routes along Headstone Drive, making it perfect for commuters and families alike.

Residents also enjoy outstanding on-site amenities including a gym, café, restaurant and supermarket, providing exceptional convenience right on your doorstep.

Presented with care by Lawrence Rand—helping you find the place you'll love to call home.

Additional Information

Council Tax band: E

Tenure: Leasehold, 990+ years remaining

Service Charge ££2,512pa (estimate), Ground Rent £550pa

EPC Energy Efficiency Rating: B

Suppliers

Electricity supply: Mains, Water supply: Mains water, Sewerage: Mains

Heating: Gas central heating

Broadband & mobile coverage

Broadband: FTTP (Fibre to the Premises)

Mobile coverage: O2 - Excellent, Vodafone - Excellent, Three - Excellent, EE - Excellent

Council Tax Band: E

Tenure: Leasehold

Length of Lease: 991

Annual Ground Rent Amount: £550.00

Annual Service Charge Amount: £2,512.00

Price: Starting Bid £495,000

Property Type: Flat

Year built: 2019

Roofing type: Flat

Risk of floods and or erosion: No

Flooded in last 5 years: No

Source of flood: Other

Flood defences: No

Planning permissions or proposals for development: No

Coalfield or mining area: No

Listed property: No

Conservation area: No

Public rights of way: No

Adaptions for accessibility: No

Restrictions: No

Required access: No

Heating: Gas

Electric: National Grid

Water: Direct mains water

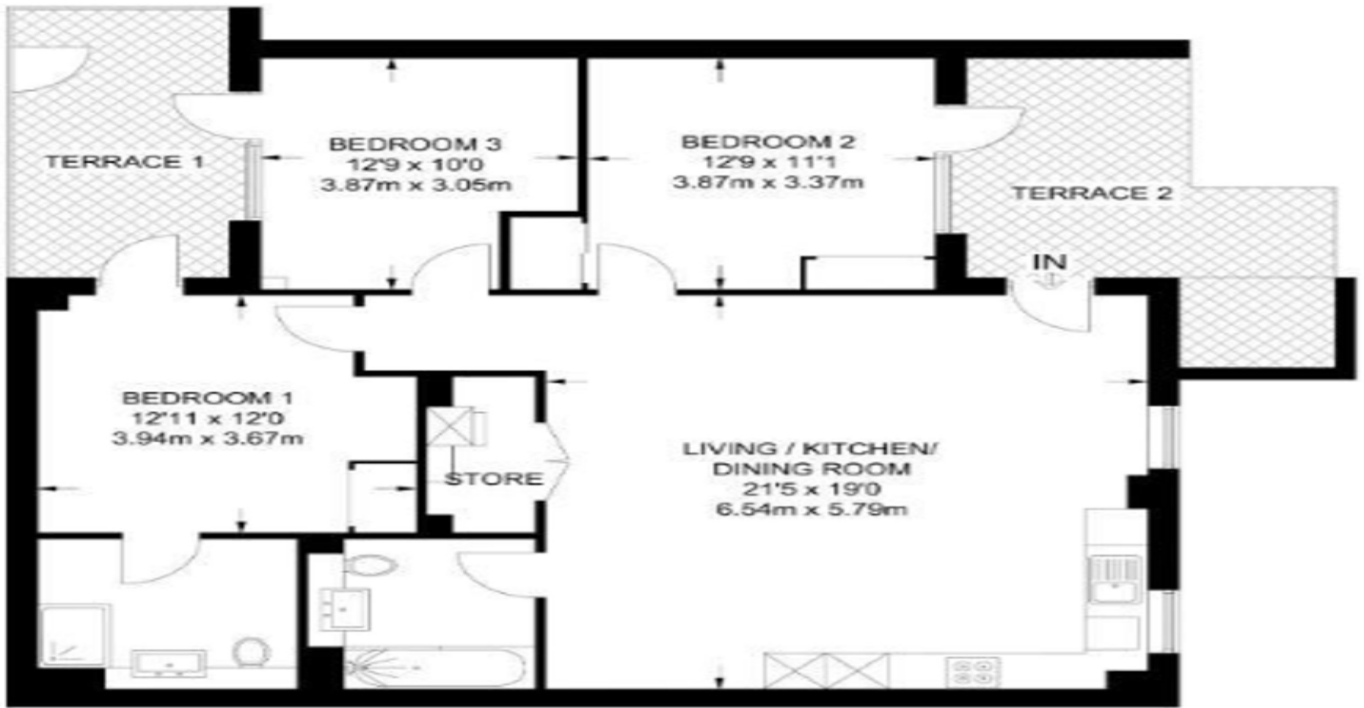
Water meter: Yes

Sewerage: Standard UK domestic

Air conditioning: No

Broadband: FTTP (fibre to the premises)

Mobile signal coverage: Good



**APPROXIMATE GROSS INTERNAL AREA
1038.9 SQ FT / 96.6 SQ M**

This plan has been drawn for illustrative and identification purposes only.

Energy Efficiency Rating		
	Current	Potential
<i>Very energy efficient - lower running costs</i>		
(92-100) A		
(81-91) B	86	86
(69-80) C		
(55-68) D		
(39-54) E		
(21-38) F		
(1-20) G		
<i>Not energy efficient - higher running costs</i>		
England, Scotland & Wales	EU Directive 2002/91/EC	

Lensview Close, Harrow, Middlesex, HA1 4GU

Contact your local branch today for more information on this property:

White Rose House, Thurston Road, Northallerton, North Yorkshire, DL6 2NA,

<https://www.alignsurveyors.co.uk/>

These particulars, whilst believed to be accurate are set out as a general outline only for guidance and do not constitute any part of an offer or contract. Intending purchasers should not rely on them as statements of representation of fact, but must satisfy themselves by inspection or otherwise as to their accuracy. No person in this firm's employment has the authority to make or give any representation or warranty in respect of the property.

