



3 bed terraced house to buy in

Normount Road, Grainger Park, Newcastle upon Tyne, Tyne and Wear, NE4 8SH

£188,000 Offer Over

🏠 x3 🚗 x1 🚲 x2

Tenure

Freehold

On Street parking

Property features

- ✓ Terraced House - Three Bedrooms
- ✓ Sought After Location
- ✓ Updated Throughout
- ✓ Viewing Recommended

Key Information

- ✓ Council Tax: Band A
- ✓ Heating supply: Gas

Description

A well-presented and recently refurbished three-bedroom terraced home, finished to a high standard throughout and ready for immediate occupation. Upon entering, the property welcomes you with a bright entrance hall leading into a comfortable and stylish lounge, perfect for relaxing or entertaining. The separate dining room offers an ideal space for family meals or hosting guests, while the modern kitchen has been thoughtfully updated to provide both functionality and contemporary appeal.

To the first floor, there are three well-proportioned bedrooms, each offering ample space and natural light, along with a beautifully finished family bathroom.

This attractive home combines modern living with practical layout, making it an excellent choice for first-time buyers, families, or investors alike.

Council Tax Band: A

Tenure: Freehold

Price: Offer Over £188,000

Property Type: Terraced House

Parking: On Street

Heating: Gas

Entrance Hall

Lounge

5.70m x 3.90m (18'8" x 12'9")



Dining Room

4.40m x 4.00m (14'5" x 13'1")



Kitchen

4.00m x 2.30m (13'1" x 7'6")



Stairs to First Floor

Bedroom 1

4.30m x 3.20m (14'1" x 10'5")



Bedroom 2

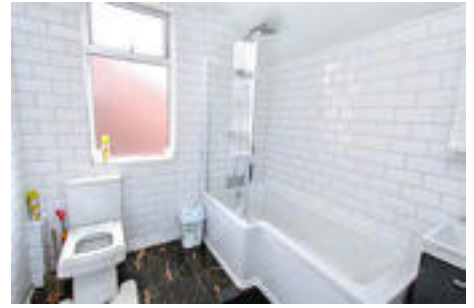
4.40m x 3.10m (14'5" x 10'2")



Bedroom 3

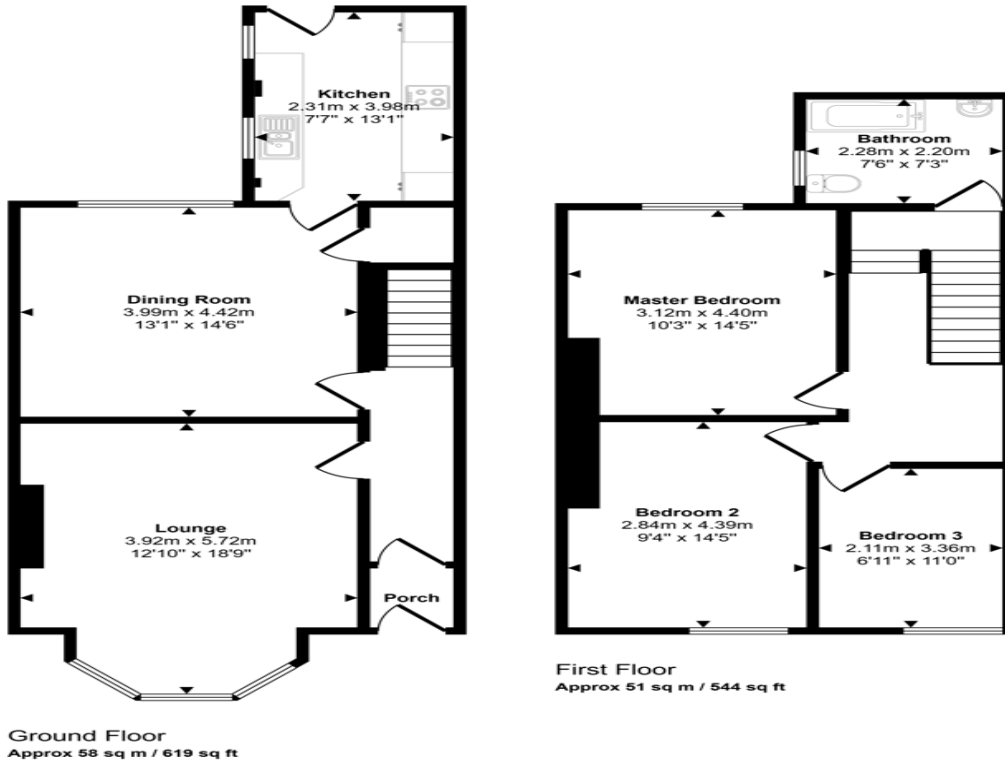
3.40m x 2.10m (11'1" x 6'10")

Bathroom



Yard to Rear

Approx Gross Internal Area
108 sq m / 1163 sq ft



This floorplan is only for illustrative purposes and is not to scale. Measurements of rooms, doors, windows, and any items are approximate and no responsibility is taken for any error, omission or mis-statement. Icons of items such as bathroom suites are representations only and may not look like the real items. Made with Made Snappy 360.

Normount Road, Grainger Park, Newcastle upon Tyne, Tyne and Wear, NE4 8SH

Contact your local branch today for more information on this property:

White Rose House, Thurston Road, Northallerton, North Yorkshire, DL6 2NA,

<https://www.alignsurveyors.co.uk/>

These particulars, whilst believed to be accurate are set out as a general outline only for guidance and do not constitute any part of an offer or contract. Intending purchasers should not rely on them as statements of representation of fact, but must satisfy themselves by inspection or otherwise as to their accuracy. No person in this firm's employment has the authority to make or give any representation or warranty in respect of the property.



<https://www.alignsurveyors.co.uk/> -