



## 2 bed semi-detached house to buy in DH7

Ridding Court, Esh Winning, Durham, Durham, DH7 9HY

**£89,000** Starting Bid

x2 x1 x1

Tenure  
**Freehold**

On Street parking

## Property features

- ✓ Semi Detached
- ✓ Two Bedrooms
- ✓ Two Reception Rooms
- ✓ Wet Room
- ✓ EPC Rating D

## Key Information

- ✓ Council Tax: Band A
- ✓ EPC Rating: D
- ✓ Heating supply: Gas

## Description

TO BE SOLD VIA OUR ONLINE AUCTION. FEES APPLY.

For sale is this delightful two-bedroom semi-detached property located in the charming area of Esh Winning, Durham. This residential sale offers an excellent opportunity for both first-time buyers and seasoned investors seeking to expand their portfolio.

As you enter the property, you will immediately appreciate the generous space provided by two beautiful reception rooms, offering the perfect backdrop for entertaining or spending quality family time. With one bathroom already included, it offers both functionality and comfort for all home dwellers.

The two well-proportioned bedrooms hint at the tranquillity of the rest of the property. Each room is designed with plenty of space for furniture and personal belongings, seamlessly blending comfort and practicality.

The exterior of the property maintains its charming semi-detached style, offering a fantastic opportunity to put your stamp on this charming home. In the garden, potential lies for landscaping for those with green fingers, which could truly make this house into a home.

Located in Esh Winning, the property benefits from the beauty and tranquillity of the Durham countryside, while still being conveniently placed for local amenities and transport links.

This property invites you to step inside and imagine the possibilities of making it your very own dream home. It's an opportunity not to be missed in one of Durham's most charming areas. Contact Pattinson Estate Agents to arrange your viewing today.

Council Tax Band: A

Tenure: Freehold

Price: Starting Bid £89,000

Property Type: Semi-detached house

Parking: On Street

Listed property: No

Conservation area: No

Heating: Gas

Water meter: No

## Front Exterior



## Living Room

5.80m x 3.40m (19'0" x 11'1")

Spacious living room with window to front and patio doors to the rear garden.



## Dining Room

3.30m x 2.80m (10'9" x 9'2")

Dining room off the hallway leading into the kitchen.



## Kitchen

3.40m x 2.90m (11'1" x 9'6")

Good size kitchen with base and wall units and window overlooking the garden.



## Bedroom 1

3.80m x 3.10m (12'5" x 10'2")

Spacious double bedroom with plenty of storage cupboards.



## Bedroom 2

3.80m x 2.90m (12'5" x 9'6")

Second double bedroom with built-in storage.



---

## Shower Room

This spacious bathroom has been converted into a wet room with W.C and pedestal sink and large frosted windows.



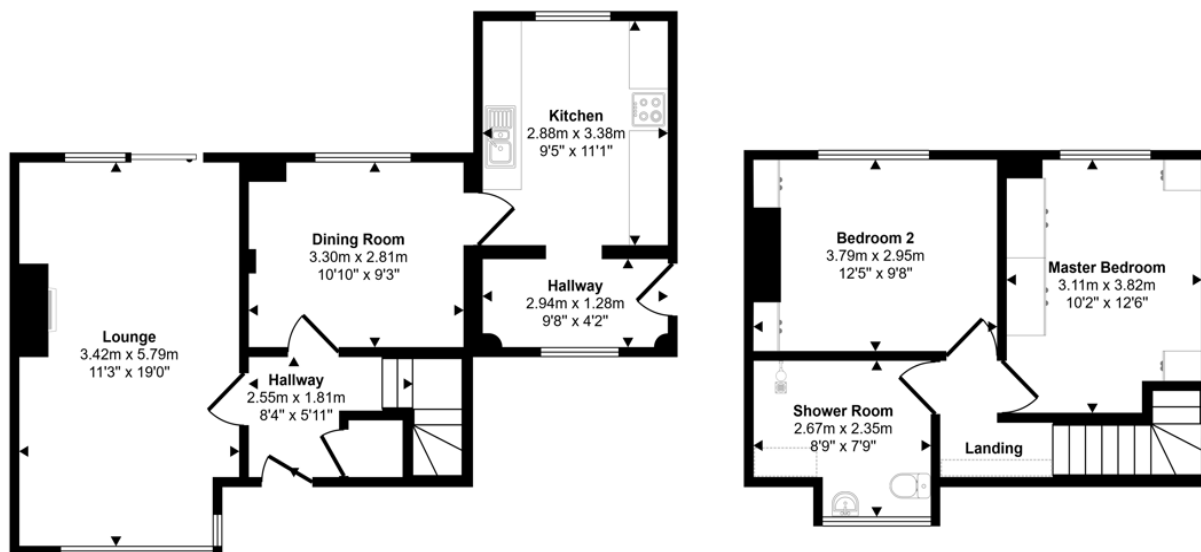
---

## Rear Garden

---

## Additional photo

Approx Gross Internal Area  
86 sq m / 924 sq ft



Ground Floor  
Approx 51 sq m / 554 sq ft

First Floor  
Approx 34 sq m / 370 sq ft

Denotes head height below 1.5m

This floorplan is only for illustrative purposes and is not to scale. Measurements of rooms, doors, windows, and any items are approximate and no responsibility is taken for any error, omission or mis-statement. Icons of items such as bathroom suites are representations only and may not look like the real items. Made with Made Snappy 360.

Energy Efficiency Rating		Current	Potential
<i>Very energy efficient - lower running costs</i>			
(92-100) <b>A</b>			
(81-91) <b>B</b>			
(69-80) <b>C</b>			73
(55-68) <b>D</b>	57		
(39-54) <b>E</b>			
(21-38) <b>F</b>			
(1-20) <b>G</b>			
<i>Not energy efficient - higher running costs</i>			
<b>England, Scotland &amp; Wales</b>		EU Directive 2002/91/EC	

Ridding Court, Esh Winning, Durham, Durham, DH7 9HY

Contact your local branch today for more information on this property:

**White Rose House, Thurston Road, Northallerton, North Yorkshire, DL6 2NA,**

<https://www.alignsurveyors.co.uk/>

These particulars, whilst believed to be accurate are set out as a general outline only for guidance and do not constitute any part of an offer or contract. Intending purchasers should not rely on them as statements of representation of fact, but must satisfy themselves by inspection or otherwise as to their accuracy. No person in this firm's employment has the authority to make or give any representation or warranty in respect of the property.

