



3 bed end of terrace house to buy in NE10

Coverdale, Leam Lane, Gateshead, Tyne
and Wear, NE10 8HX

£120,000 Offers Over

🏠 x3 🛋️ x1 🚗 x1

Tenure
Freehold

Driveway parking

Property features

- ✓ Mid Terrace House
- ✓ Three Bedrooms
- ✓ Off Road Parking
- ✓ UPVC Double Glazing
- ✓ Gas Central Heating

Key Information

- ✓ Council Tax: Band A
- ✓ Heating supply: Gas
- ✓ Electric supply: National Grid

Description

Located in a popular residential area, this deceptively spacious three bedroom terraced house is ideally situated close to local shops, bus routes, schools and Oliver Henderson Park, making it an excellent choice for families. The property benefits from gas central heating, UPVC double glazing, a boarded loft with skylights, gardens and off road parking.

The accommodation comprises an entrance porch, lounge, kitchen, three bedrooms and a wet room. A loft ladder provides access to the boarded loft space, offering useful additional storage or flexible use, subject to any necessary consents.

Externally, there is a garden to the front, while the rear garden provides off road parking. This well positioned home offers generous accommodation and convenient access to a range of local amenities and transport links.

Council Tax Band: A

Tenure: Freehold

Price: Offers Over £120,000

Property Type: End of terrace house

Parking: Driveway

Heating: Gas

Electric: National Grid

Sewerage: Standard UK domestic

Air conditioning: No

Entrance Porch

UPVC double glazed windows and door

Lounge

5.00m x 5.20m (16'4" x 17'0")

UPVC double glazed window, radiator, open plan staircase, second radiator, under-stairs cupboard



Kitchen

5.00m x 2.10m (16'4" x 6'10")

Fitted wall and base units, electric hob with extractor over, built in electric oven, space for automatic washing machine one and a half bowl sink and drainer, UPVC double glazed window and door with side panel



Landing



Bedroom One

3.60m x 3.10m (11'9" x 10'2")

UPVC double glazed window, radiator



Bedroom Two

3.10m x 3.10m (10'2" x 10'2")

UPVC double glazed window, radiator, loft access with ladder to the loft



Loft

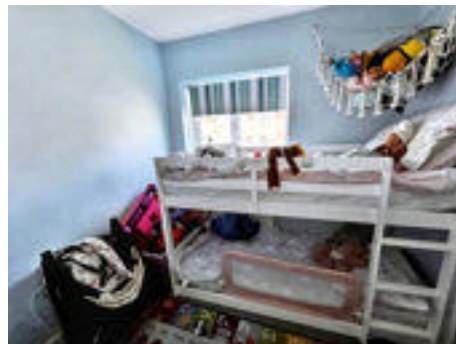
Boarded with skylights



Bedroom Three

2.30m x 2.60m (7'6" x 8'6")

UPVC double glazed window, radiator, built in cupboard

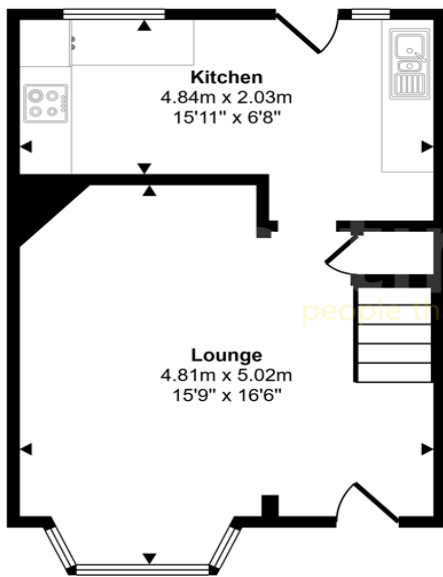


External

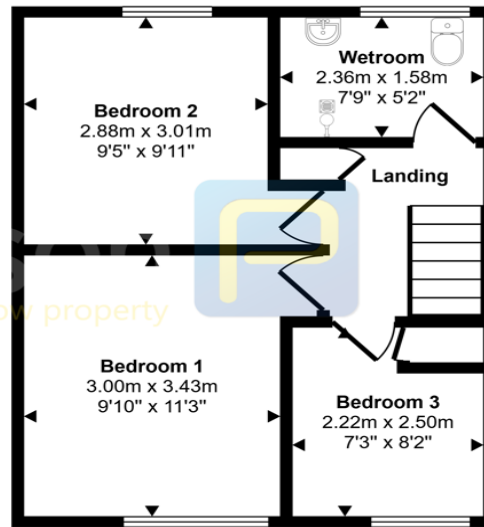
Garden to the front and a flagged rear garden with double gates for off road parking



Approx Gross Internal Area
68 sq m / 736 sq ft



Ground Floor
Approx 33 sq m / 354 sq ft



First Floor
Approx 35 sq m / 382 sq ft

This floorplan is only for illustrative purposes and is not to scale. Measurements of rooms, doors, windows, and any items are approximate and no responsibility is taken for any error, omission or mis-statement. Icons of items such as bathroom suites are representations only and may not look like the real items. Made with Made Snappy 360.

Coverdale, Leam Lane, Gateshead, Tyne and Wear, NE10 8HX

Contact your local branch today for more information on this property:

White Rose House, Thurston Road, Northallerton, North Yorkshire, DL6 2NA,

<https://www.alignsurveyors.co.uk/>

These particulars, whilst believed to be accurate are set out as a general outline only for guidance and do not constitute any part of an offer or contract. Intending purchasers should not rely on them as statements of representation of fact, but must satisfy themselves by inspection or otherwise as to their accuracy. No person in this firm's employment has the authority to make or give any representation or warranty in respect of the property.

